



Even Cares for Your Eyes
Introducing new Dental Light

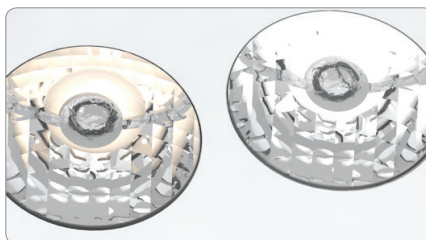
Luvis C 500



Luvis C500

Introducing new Dental Light

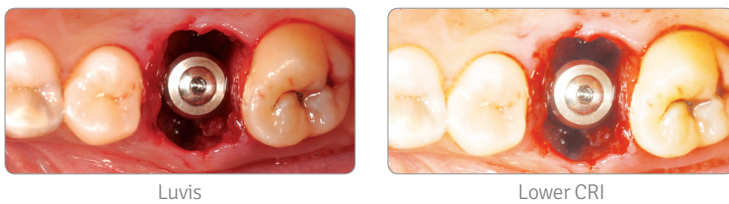
As adopting latest technology, Luvis C500 bring various new feature to users: Selectable color temperature / wider focus / sensor(on/off, Intensity control). In addition, internal camera / resin mode cover / remote controller will be selected by users. Adding this feature on benefit from LED will help the doctor and patients in their good conditions.



User Friendly Feature

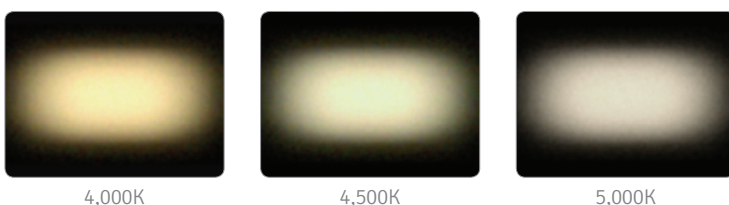
High Color Rendering Index (CRI)

Luvis suggests high CRI of Ra 95 which may realize more clear and nature-like color. It helps to reduce the eye fatigue compared to higher brightness with low CRI.



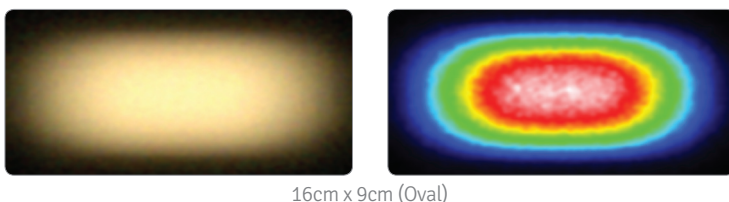
Selectable Color Temperature

3 Steps of color temperature (4,000K/4,500K/5,000K) adjustment will help doctors to find more suitable and comfortable light color.



Wider Focus

With its highest level of uniformity ($d50/d10 > 75$) and wider focal pattern, Luvis C500 delivers stable Intensity and quality light to the focal side.



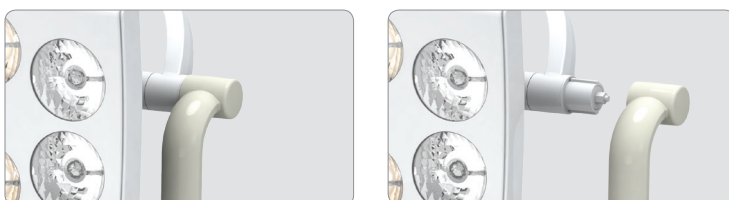
Easy to Control

Luvis C500 brings two types of control. Conventional controller is located on the back panel of the light. From the front, the user can control On/Off, Intensity by sensor.



Detachable Main Handle

It can be used inside an autoclave without damage.



New Feature

Camera (Option)



Resin Cover (Option)



Remote controller (Option)

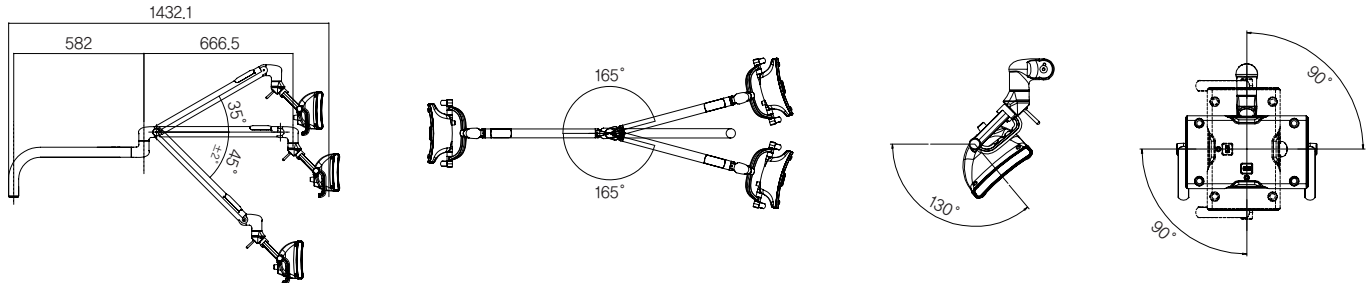


Technical Specification

Classification		Unit	Specification	Reference
Centre intensity (@ 70cm)	Min	Lux	3,000 Lux	@ 4,500K
	Max	Lux	50,000 Lux	
Focal Distance		Cm	70	
Focal Pattern (@ d10)		Cm	16.0 x 9.0	Oval shape
Focal Pattern (@ d50)		Cm	12.7 x 6.7	Oval Shape
Uniformity (d50/d10)		N/A	< 75%	
Color temperature (3steps)		K	4,000/4,500/5,000	Selectable
C.R.I.(Ra)		N/A	95	@ 4,000K
Input Voltage			AC12-18V	50/60Hz
			DC15V 4.0A	Camera Type / Using Adapter
Consumption			<30W	
LED life time			50,000LUX	

Camera	Specification
Image Sensor	1 / 2.8" CMOS
Lens	30x Optical zoom
Image Point	2.38 M Pixel
Object Distance (Min.)	600~800mm (Tele end)
Video Signal	HD-SDI Coaxial cable 1080p/1080i/720p

Working Range



Head Office

99, Seongseoseo-ro, Dalseo-gu, Daegu, South Korea.
Tel +82-1899-2804 / Fax +82-53-583-0037

Seoul Office

#1012, Leaders Tower, 286, Beotkkot-ro, Geumcheon-gu, Seoul, South Korea.
Tel +82-2-869-6020 / Fax +82-2-869-6021

Overseas Branch

U.S.A +1-323-677-4363~5 Taiwan +886-2-2808-5933

DENTIS Medical Division

6, Yuram-Ro, Dong-Gu, Daegu, South Korea.
Tel +82-1899-2804 / Fax +82-53-583-0037

©2017 DENTIS CO.,LTD. All Right Reserved.

Trademarks are the property of DENTIS CO., LTD. Or their respective owners.
Specifications are subject to change without notice.